



MID-ATLANTIC  
ACQUISITIONS LLC

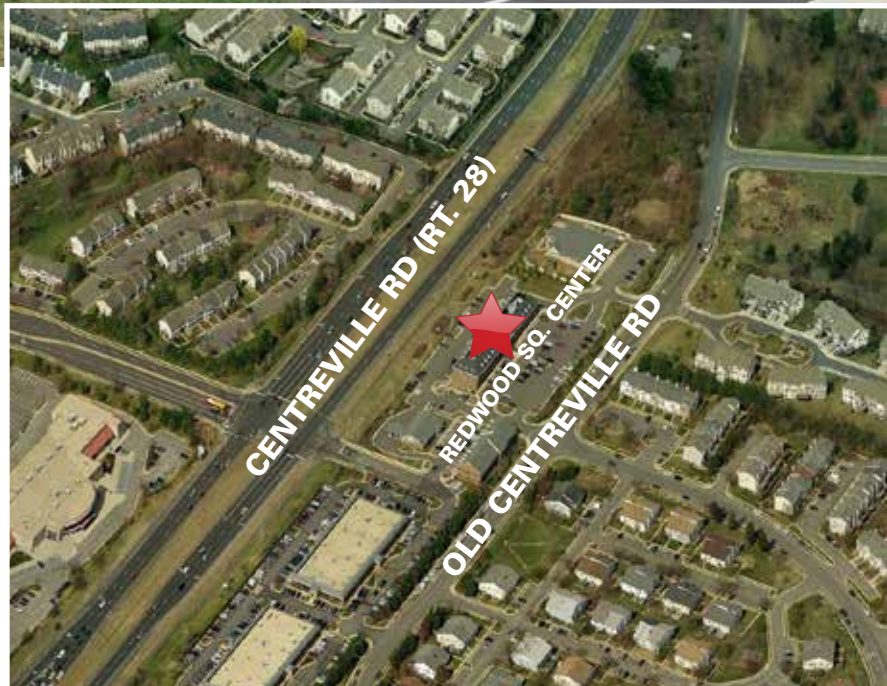
FOR LEASE  
1,599 SF ON UPPER LEVEL

6101 REDWOOD SQ. CTR. | CENTREVILLE, VA

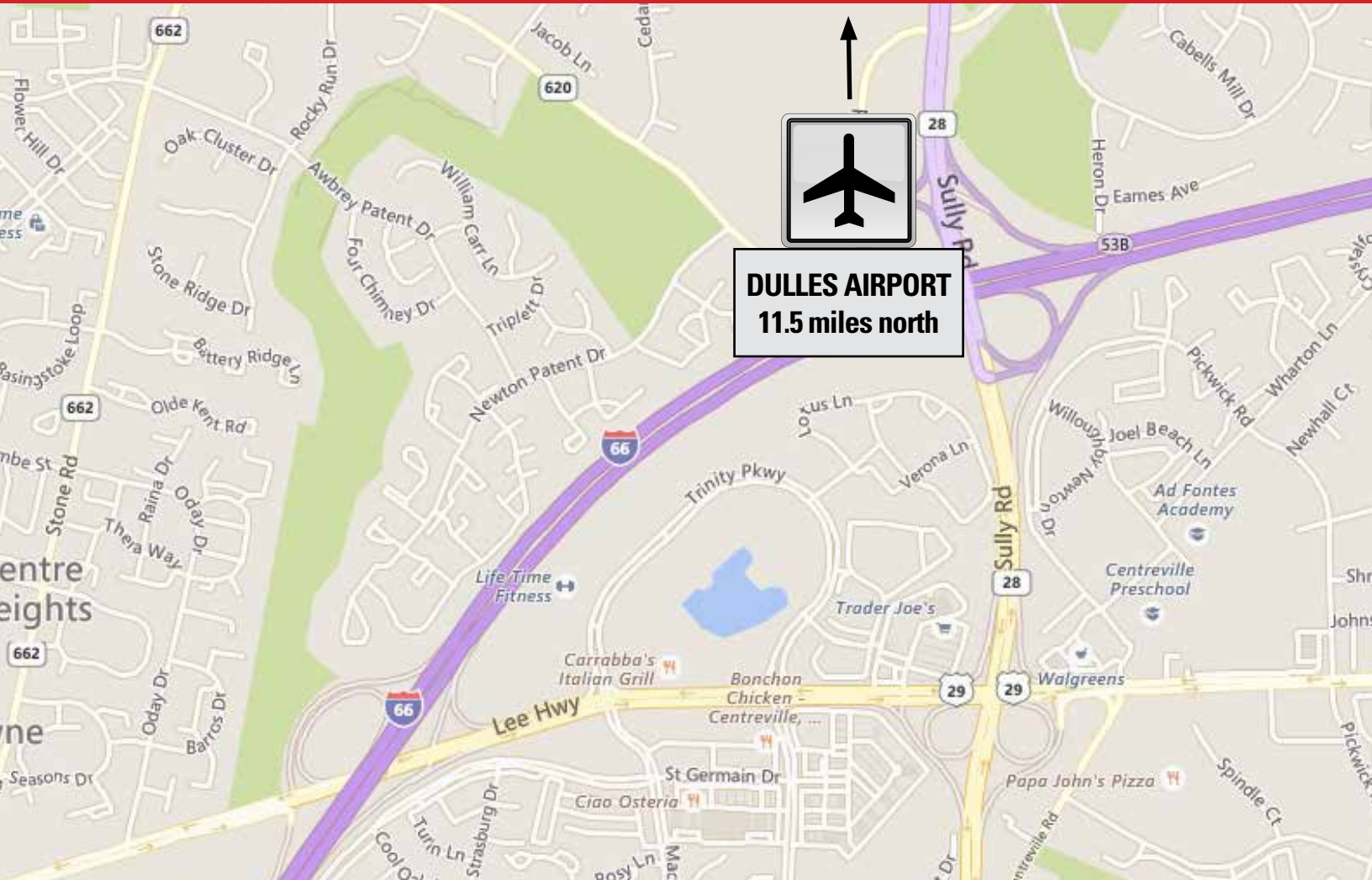


### Property Information

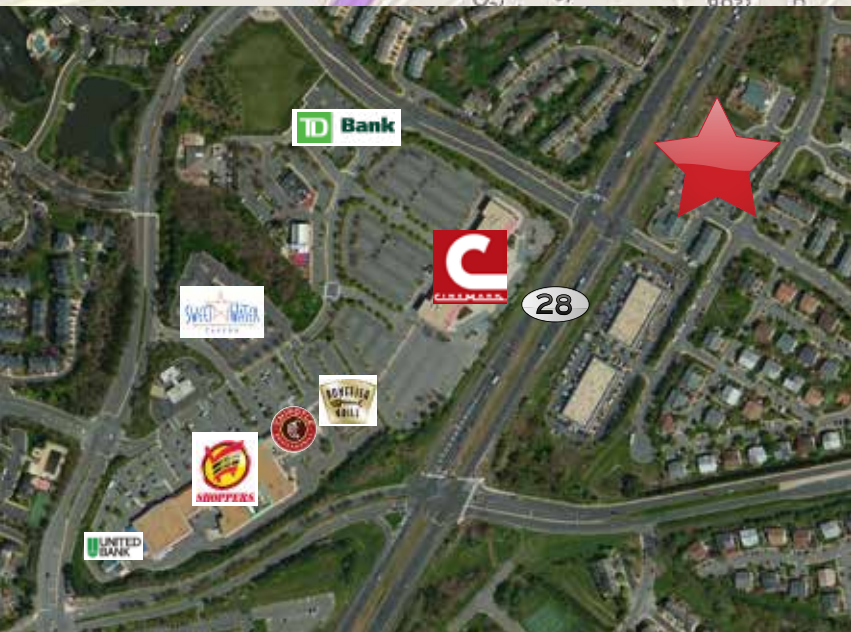
- **Suite 304, 1,599 SF**
- Fully sprinkled
- Elevator
- Ample surface parking
- Excellent accessibility
- Easy ingress/egress from Rt. 66, Rt. 28 & Rt. 29
- Numerous eateries and retail establishments are within walking distance
- Great visibility from Centreville Road
- Flexible floor plates



Contact Traci Morris Cole | 703.328.7884 | [www.midacq.com](http://www.midacq.com)



**DULLES AIRPORT**  
11.5 miles north

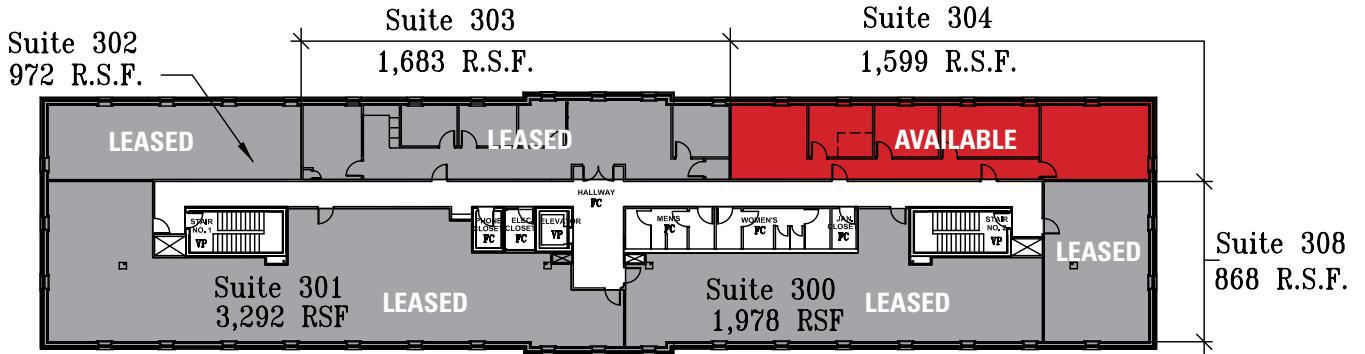


**6101 Redwood Sq. Ctr.**

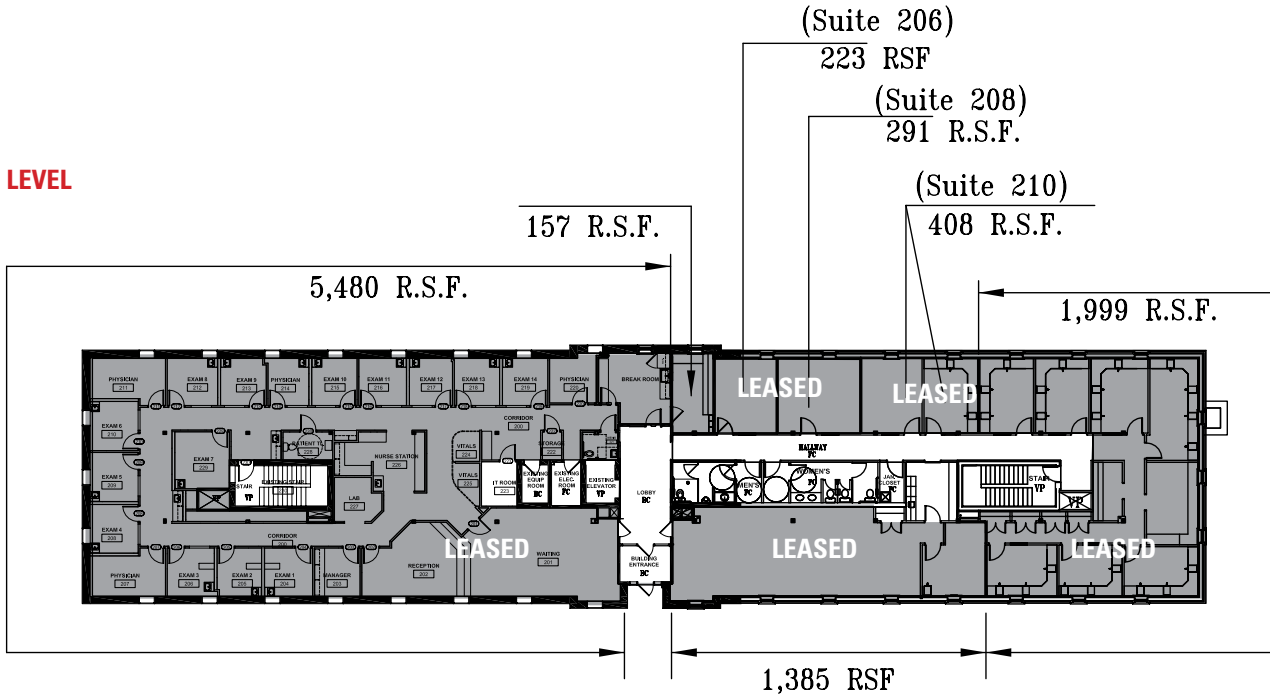


# TOTAL BUILDING BOMA RSF: 29,277 SF

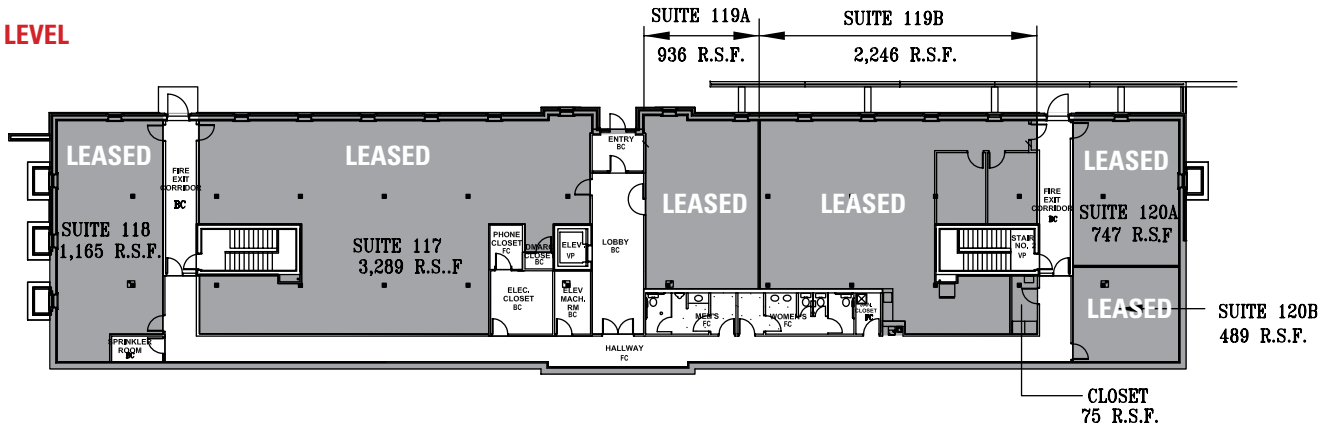
## UPPER LEVEL



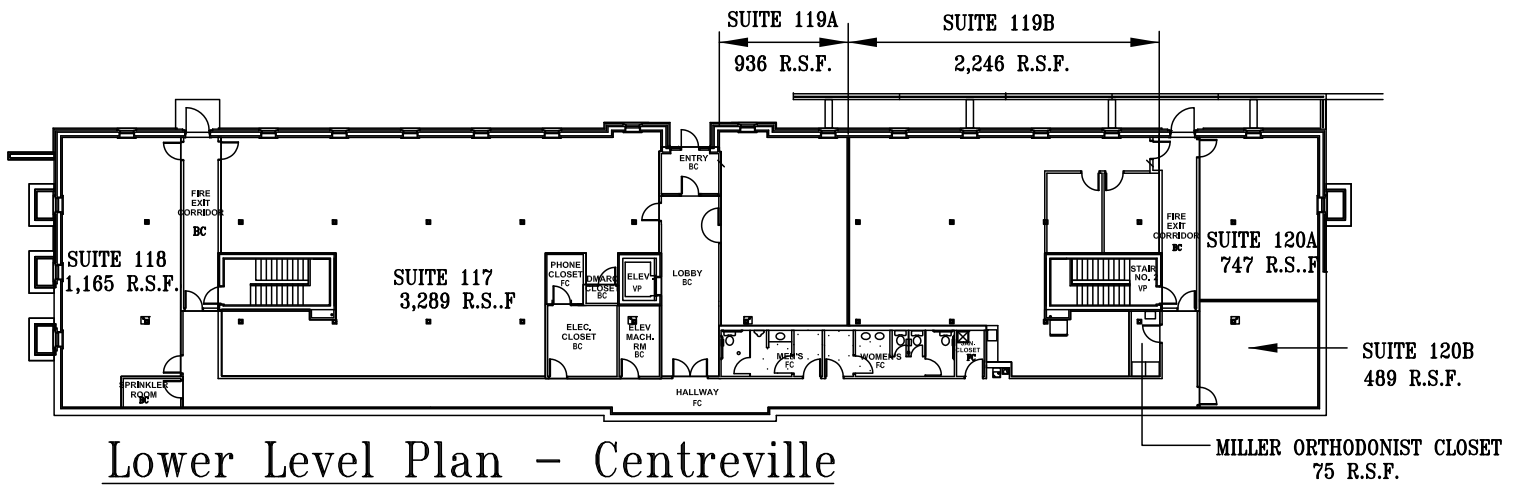
## MAIN LEVEL



## LOWER LEVEL



TOTAL AVAILABLE BOMA RSF: 29,277 SF



Lower Level Plan - Centreville  
TOTAL: 8,946 R.S.F. 9-18-17

## OUR PRESTIGIOUS TENANTS INCLUDE

RGS Title, LLC  
Primus Physical Therapy  
Dream Alliance, Inc.  
Salutation Station  
Dr. Cheron

Dr. Tran  
INOVA  
Bryan Hunt, CPA  
Edward Jones  
Michael A. Spicer

Clifton Foot  
Seokbong Kang  
NOVA Medical Billing  
Minjin Systems  
The Perfect Workout, Inc.



Contact Traci Morris Cole | 703.328.7884 | [www.midacq.com](http://www.midacq.com)